



MASTER LEDtube EM/ Mains T8

MASTER LEDtube STD 1200mm 10.5W865 T8 I

The Philips MASTER LEDtube integrates a LED light source into a traditional fluorescent form factor. Its unique design creates a perfectly uniform visual appearance which cannot be distinguished from traditional fluorescent. For those that are looking for value for money within limited budget and re-lamping efforts for better light effect and lifetime.

Product data

General Information	
Cap-Base	G13 [Medium Bi-Pin Fluorescent]
RoHS mark	RoHS mark
Nominal Lifetime (Nom)	50000 h
Switching Cycle	200000X
B50L70	50000 h
Light Technical	
Color Code	865 [CCT of 6500K]
Luminous Flux (Nom)	1600 lm
Luminous Flux (Rated) (Nom)	1600 lm
Correlated Color Temperature (Nom)	6500 K
Color Consistency	<6
Color Rendering Index (Nom)	83
LLMF At End Of Nominal Lifetime (Nom)	70 %
Operating and Electrical	
Input Frequency	50 to 60 Hz
Power (Nom)	10.5 W
Lamp Current (Max)	50 mA

Lamp Current (Min)	45 mA
Starting Time (Nom)	0.5 s
Warm Up Time to 60% Light (Nom)	0.5 s
Power Factor (Nom)	0.9
Voltage (Nom)	220-240 V
Temperature	
T-Ambient (Max)	45 °C
T-Ambient (Min)	-20 °C
T-Storage (Max)	65 °C
T-Storage (Min)	-40 °C
T-Case Maximum (Nom)	50 °C
Controls and Dimming	
Dimmable	No
Mechanical and Housing	
Product Length	1200 mm

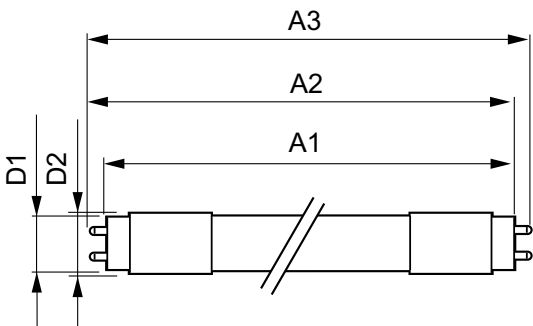
MASTER LEDtube EM/Mains T8

Approval and Application	
Energy Efficiency Label (EEL)	A++
Energy Saving Product	Yes
Approval Marks	CE marking RoHS compliance KEMA Keur certificate
Energy Consumption kWh/1000 h	11 kWh
Product Data	
Full product code	871869668770300

Order product name	MASTER LEDtube STD 1200mm 10.5W865 T8 I
EAN/UPC - Product	8718696687703
Order code	929001297708
Numerator - Quantity Per Pack	1
Numerator - Packs per outer box	10
Material Nr. (12NC)	929001297708
Net Weight (Piece)	0.251 kg

Warnings and Safety

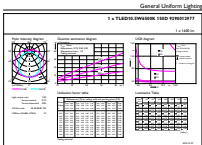
Dimensional drawing



Product	D1	D2	A1	A2	A3
MASTER LEDtube STD 1200mm 10.5W865 T8 I	25.8 mm	28 mm	1198.2 mm	1205.3 mm	1212.4 mm

TLED 220-240V 10.5W-36W 6500K G13 ND

Photometric data



General Information 14 Photometric Data 15

LEDtube MAS STD 10.5W GU13 865 ND

MASTER LEDtube EM/Mains T8

